

- German fitted kitchen by Nobilia with built in stainless steel oven, hob and extractor, integrated fridge/freezer. Washer/drier located in cylinder cupboard.
- Video door entry system.
- Luxury designer bathroom and ensuite.
- Fitted carpets to main living areas.
- Balconies to selected apartments.
- Electric panel heating throughout.
- Ceramic wall and floor tiling to kitchen, bathroom and ensuite.
- 10 year Premier Warranty.
- Secure parking included.

The Vendors give notice that these particulars are provided as a general guidance and they reserve the right to modify the specifications without notice.

The purchasers must satisfy themselves by inspection or otherwise as to the correctness of any statements, plans or illustrations contained in these particulars.

Please ask our Sales Advisor for details.

outstanding contemporary design

Southport is an extremely pleasant resort, most notable for Lord Street, a handsome boulevard lined with trees and elegant shops which runs parallel with the coast. Beyond, Marine Drive runs right along the seafront, passing the golf links to the north and Victoria Park and its esplanade to the south.

It is in the immensely privileged location of Lord Street that Maro Developments are building three

exquisitely landscaped apartment blocks that fit well into the ambience of their location. Its mixture of matching designed buildings for the courtyard garden scenario and the separate more secluded block to the rear gives an overall look that is tremendously attractive - and the interiors are perfectly in tune with today's designer expectations.

Life at 188 Lord Street is for those who value choice; the choice to relax in a top quality apartment or to indulge in one of the most elegant seaside resorts in England.

The two bedroom apartments and penthouse suites have been designed to incorporate a balance between luxury and the facilities that Southport has to offer. Every aspect has been considered to take the stress out of modern life.

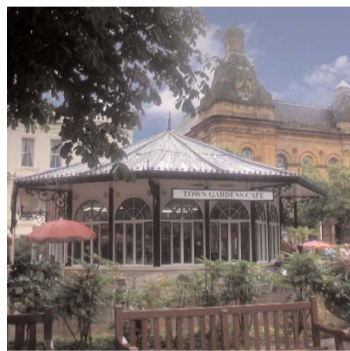
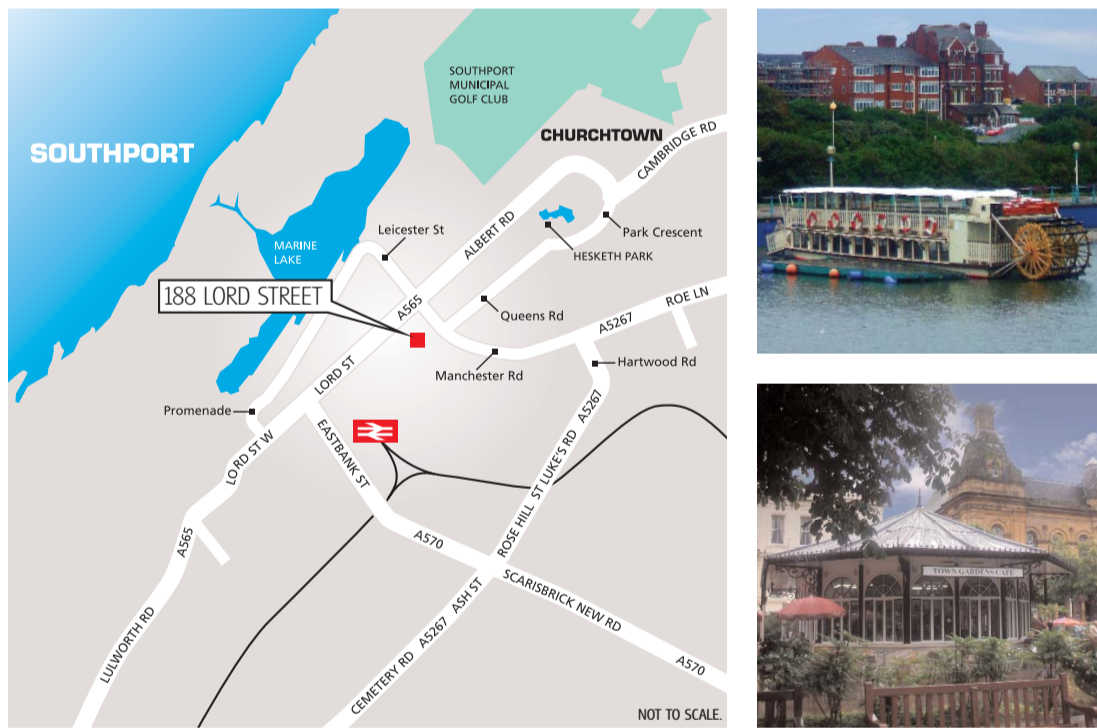


Artist's impression. External specification, finish and landscaping may vary. Please see sales consultant for details.



Internal photographs are of previous Maro developments and are included to illustrate the type of lifestyle you can expect at 188 Lord Street.

www.188lordstreet.co.uk



www.188lordstreet.co.uk



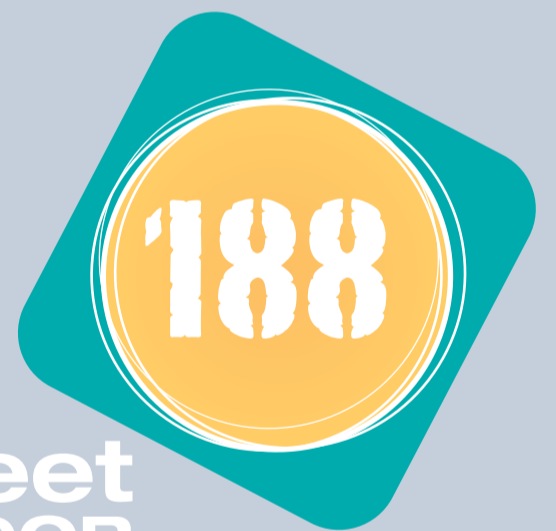
Maro Developments Ltd
Lower Meadow Road, Brooke Park, Wilmslow, Cheshire S19 3LP
Tel: 0845 402 8393 (low call rate) www.marodev.co.uk

The particulars contained in this brochure are believed to be correct but cannot be guaranteed. All liability in negligence or otherwise, for any loss arising from the use of these particulars is hereby excluded.

Designed and produced by Stratford Marketing Limited of Lichfield Tel: 01543 263942

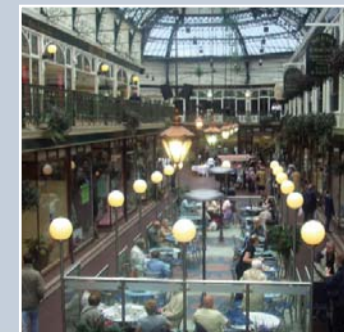
in the heart of Southport

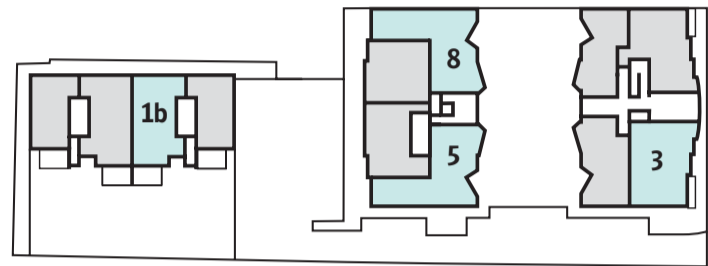
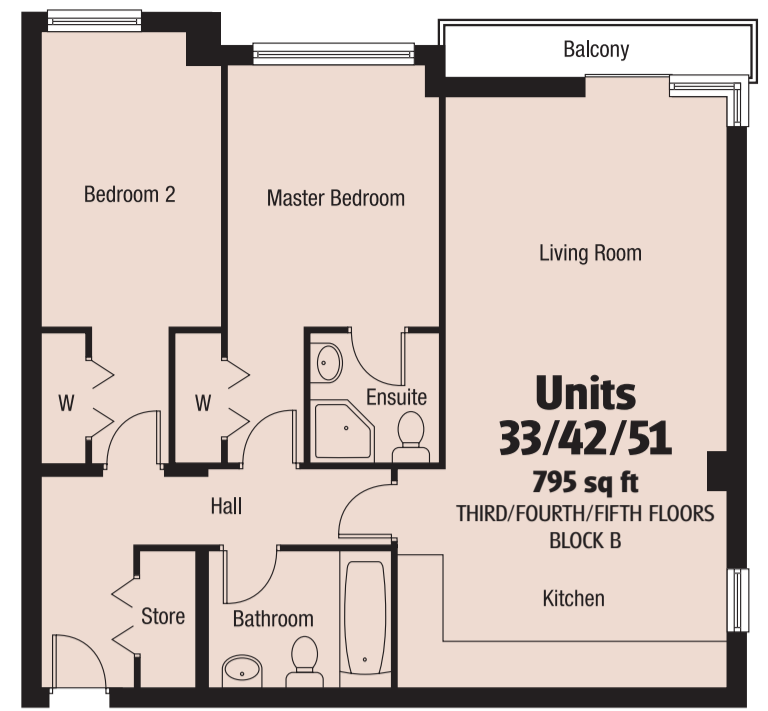
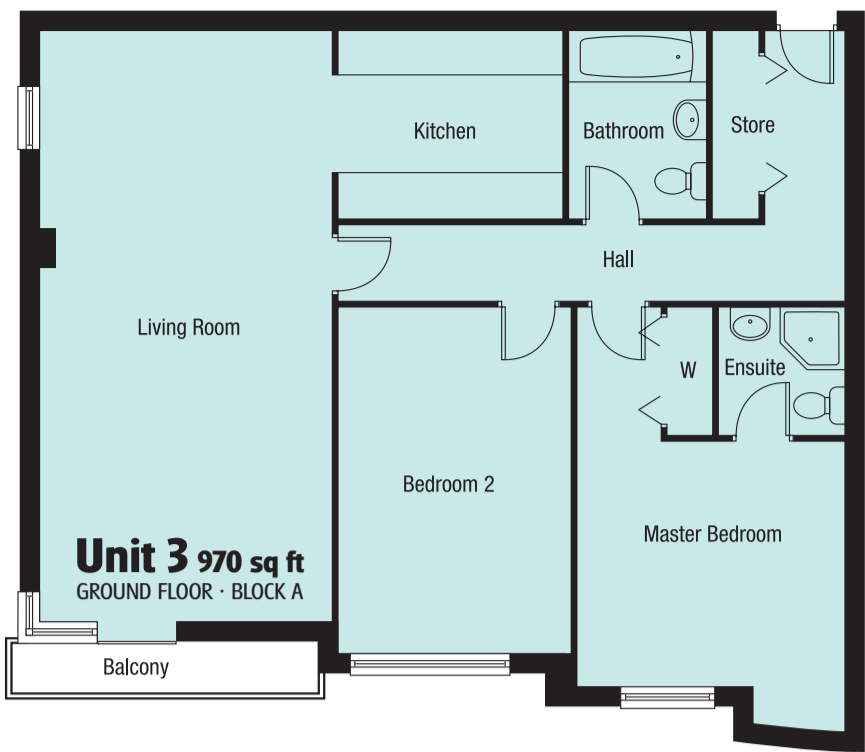
2 bedroom apartments and penthouse suites



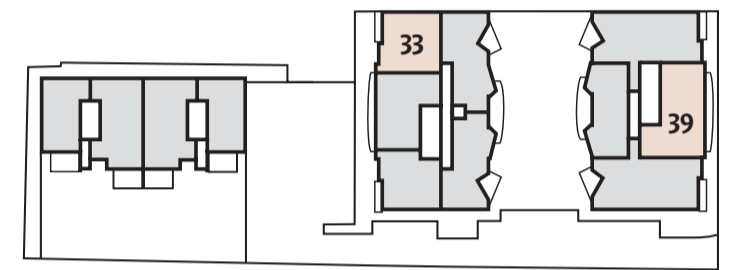
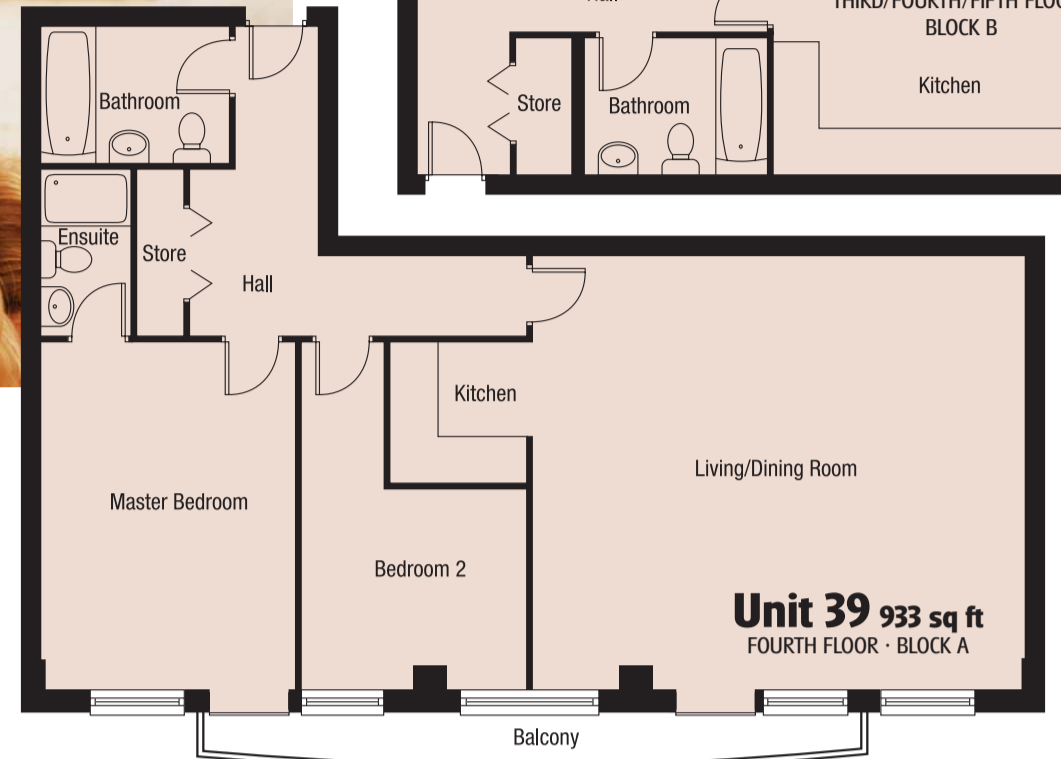
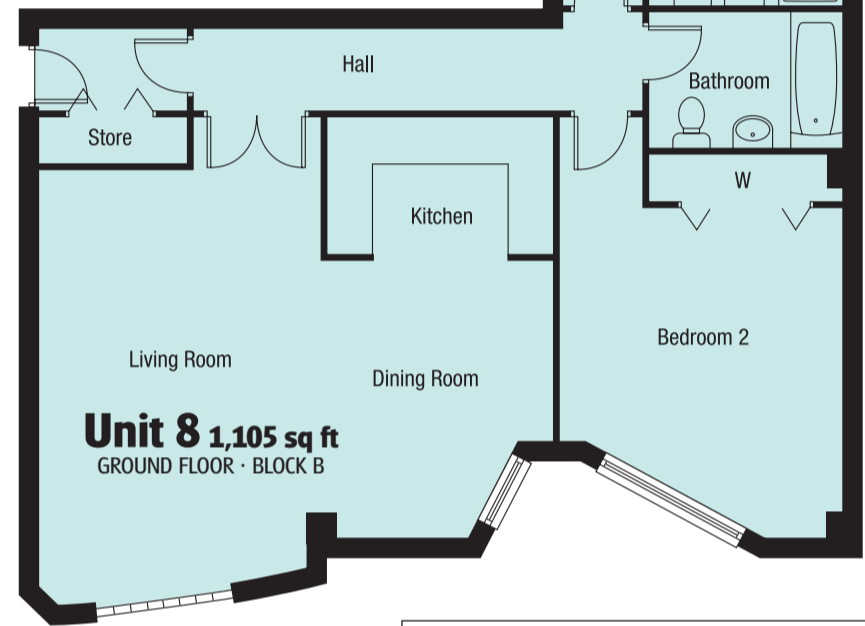
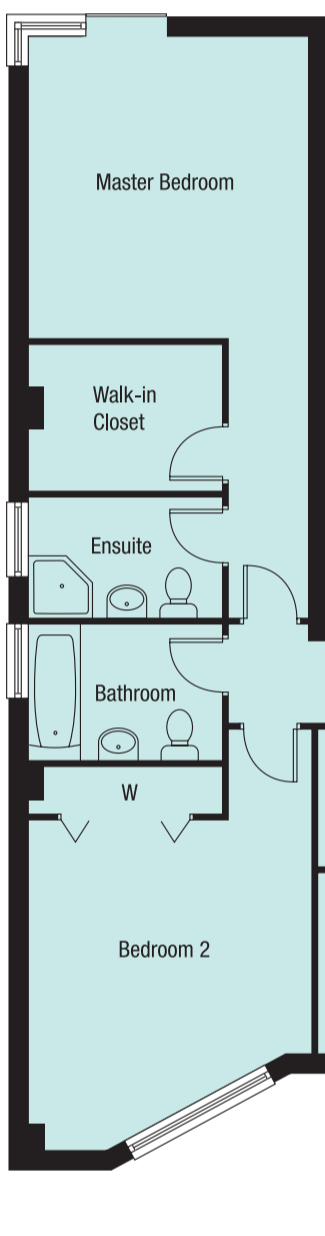
Lord Street
Southport PR7 0QR

www.188lordstreet.co.uk

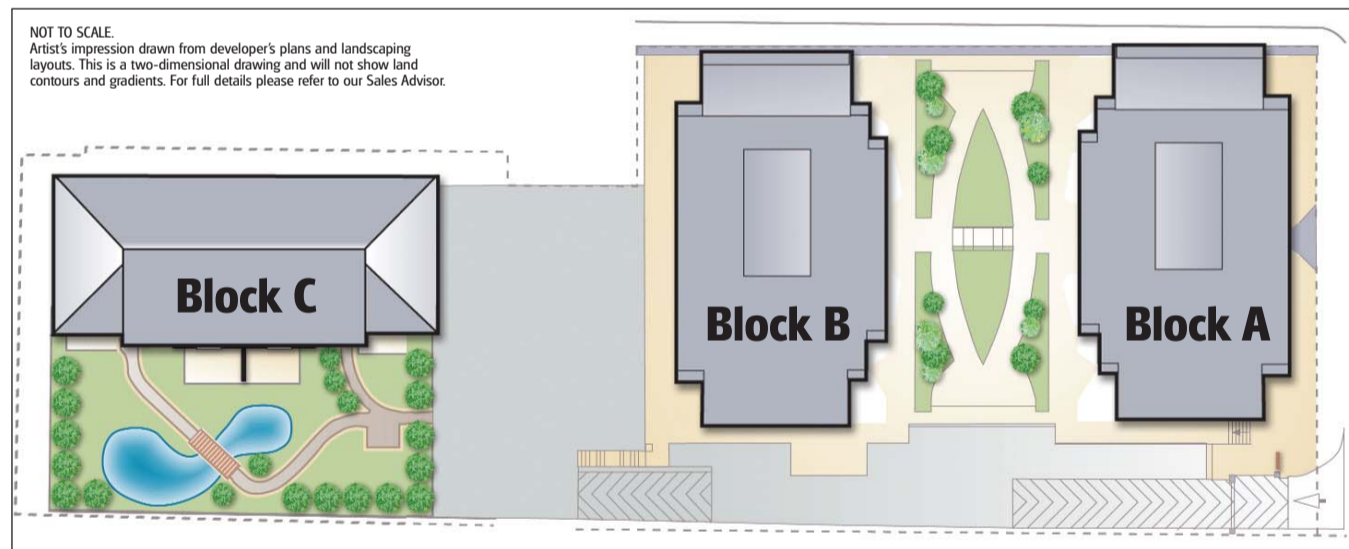




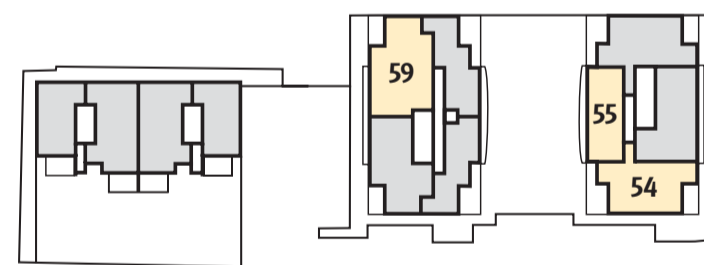
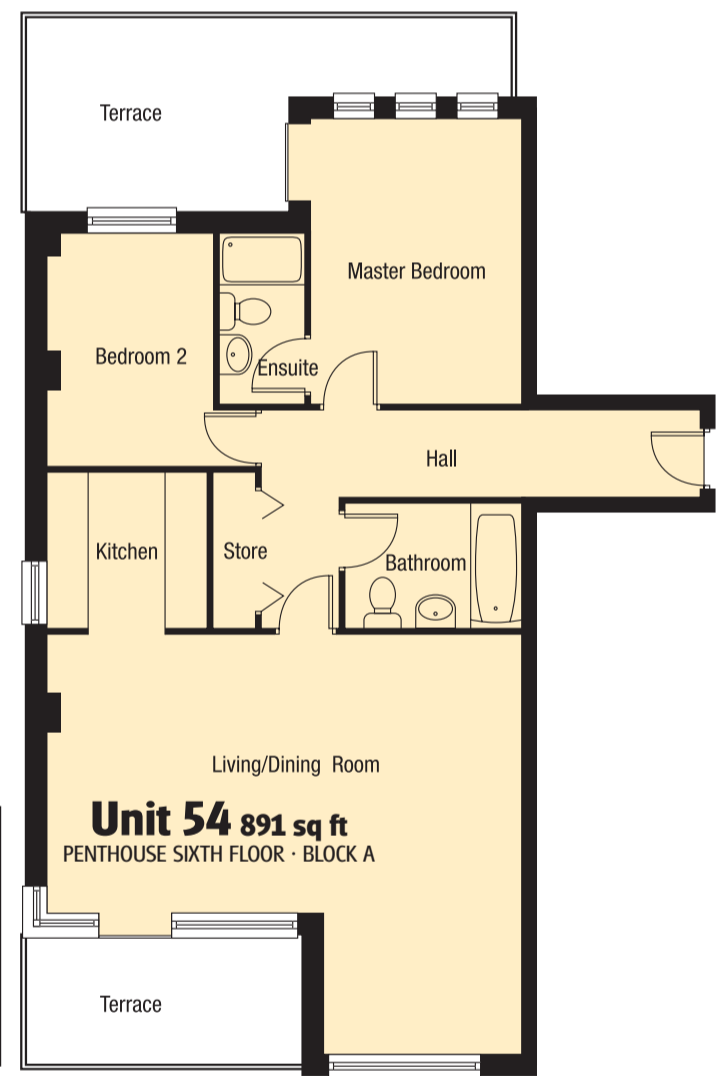
Ground Floor
NOT TO SCALE



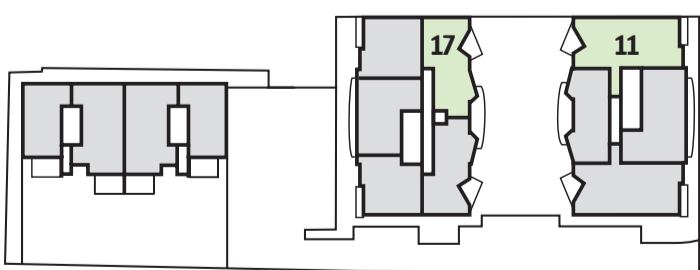
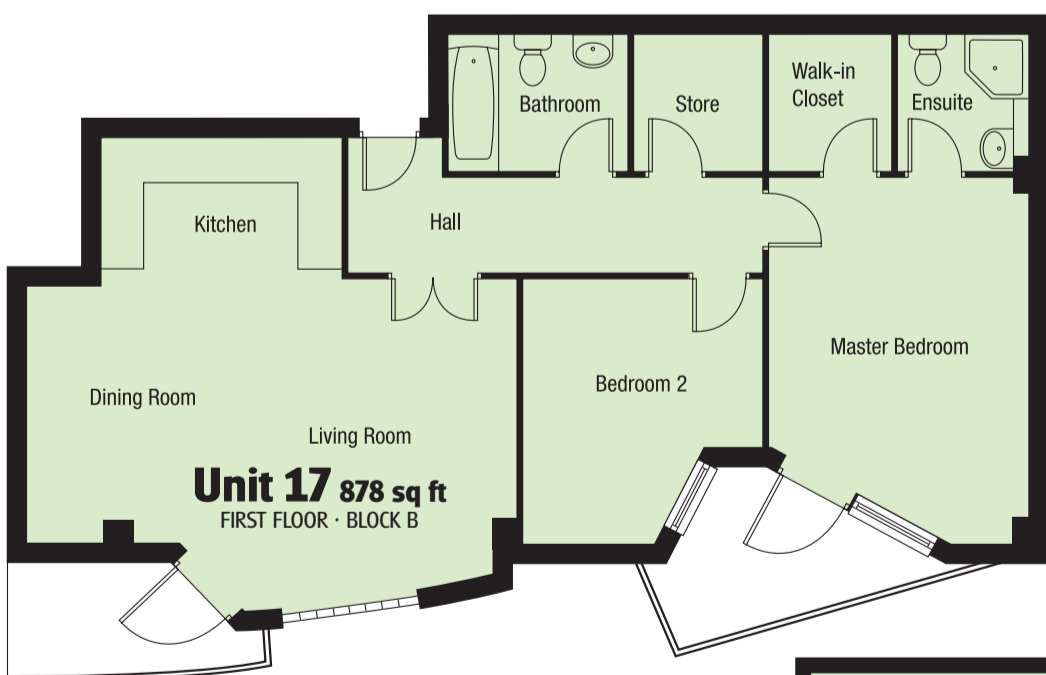
Third/Fourth/Fifth Floors
NOT TO SCALE



NOT TO SCALE.
Artist's impression drawn from developer's plans and landscaping layouts. This is a two-dimensional drawing and will not show land contours and gradients. For full details please refer to our Sales Advisor.



Penthouse Sixth Floor
NOT TO SCALE



First Floor
NOT TO SCALE

